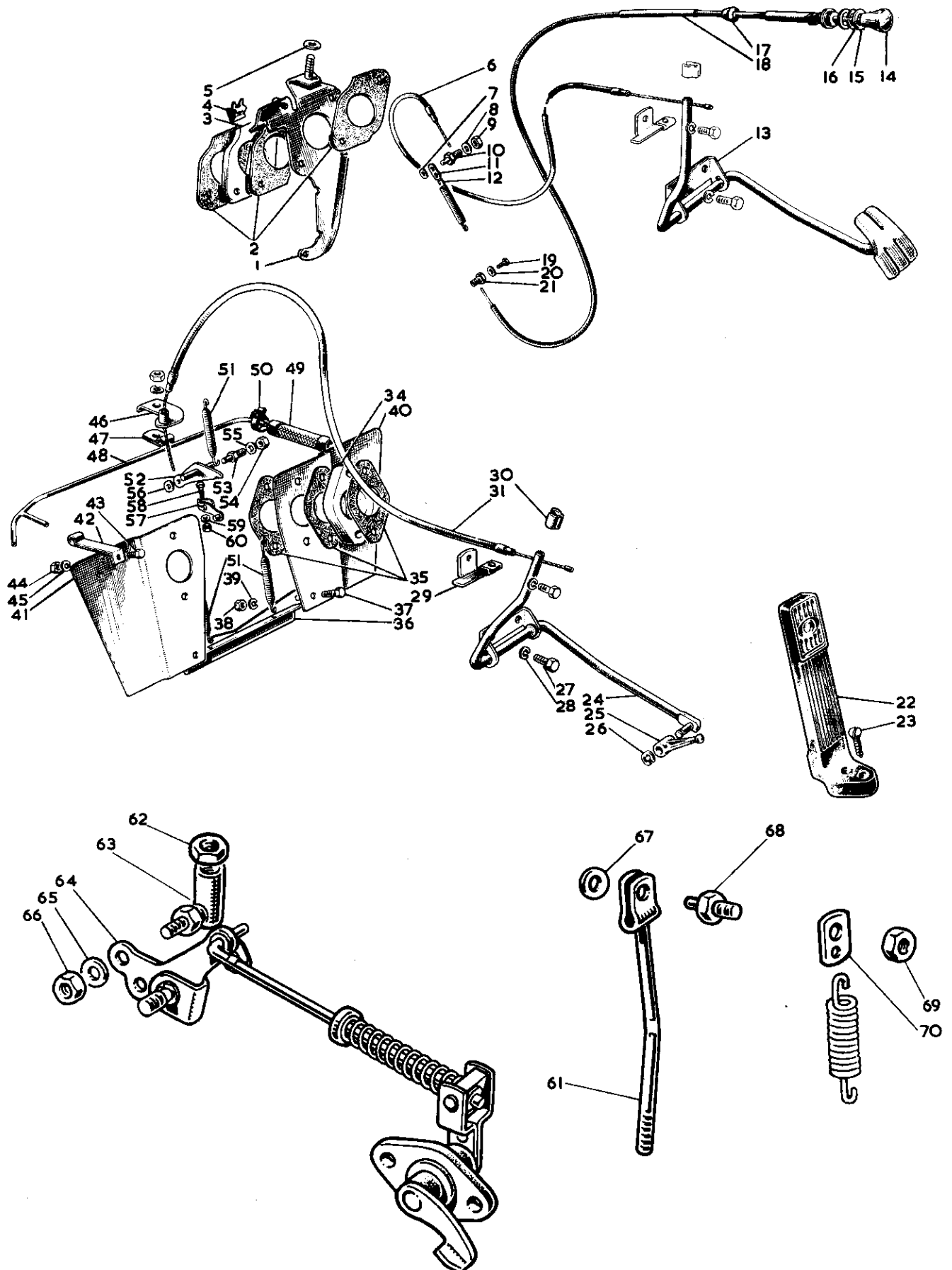


Ill. No.	Part No.	DESCRIPTION	Qty.	REMARKS
ACCELERATOR LINKAGE AND CABLE				
1	12G 766	Bracket—abutment	1	} 1000, 1001 & Minimatic
2	AEC 2083	Gasket—carburetter	3	
3	12H 1389	Piece—distance	1	
4	13H 3472	Clip—choke cable to abutment	1	
5	2K 7508	Washer	1	
6	21A 2449	Cable—accelerator	1	
7	PWZ 203	Washer	1	
8	PWZ 104	Washer	1	
9	FNZ 104	Nut	1	
10	ACC 5062	Pin—lever	1	
11	12A 4	Tag—throttle spring	1	
12	1E 5537	Spring—pull off	1	
13	AXE 517	Pedal—accelerator	1	} 1000, 1001 & Minimatic 1000 1000, 1001 & Minimatic 1300
	AXE 518	CABLE—CHOKE	1	
	AXE 358	CABLE—CHOKE	1	
14	NSP	Knob	1	
15	AXE 627	Nut—ring	1	
16	AXE 628	Washer—spring	1	
17	AXE 754	Grommet	1	
18	AXE 755	Sleeve	2	
19	53K 3503	Screw	1	
20	PWZ 103	Washer—plain	1	
21	AHA 6367	Pin—choke cable to carburetter	1	
22	AXE 411	Pedal—accelerator	1	
23	AXE 420	Screw	2	
24	AXE 413	Lever—accelerator pedal	1	
25	AXE 415	Link—accelerator pedal	1	
26	AXE 419	Clip	1	
27	HZS 0405	Screw	2	
28	LWZ 204	Washer—spring	2	
29	AXE 766	Stop—pedal	1	
30	AXE 416	Clip—spring	1	
31	21A 2449	Cable—accelerator	1	
34	12A 6	Piece—distance	2	
35	1G 2624	Gasket—carburetter	6	
36	12A 621	Piece—distance—heat shield	1	
37	HZS 0404	Screw	2	
38	NH 604041	Nut	2	
39	LWZ 304	Washer—spring	2	



Ill. N.	Part No.	DESCRIPTION	Qty.	Change Point	REMARKS
ACCELERATOR LINKAGE AND CABLE—continued					
40	12A 248	Shield—heat—carburetter—rear	1		Supplied in multiples of metres
41	AEG 352	Shield—heat—carburetter—front	1		
42	12A 263	Bracket—petrol pipe to shield	1		
43	HZS 0403	Screw	1		
44	NH 604041	Nut	1		
45	LWZ 304	Washer—spring	1		
46	AEG 349	Bracket—throttle abutment	1		
47	PCR 0409	Clip	1		
48	12A 284	Pipe—petrol—pump to carburetter	1		
49	37H 4760 M	Hose—76.2 mm	A/R		
50	ACH 5854	Clip	4		
51	AEC 2075	Spring—throttle return \$	3		
52	12A 310	Lever—throttle	1		
53	ACC 5062	Pin—lever—cable to carburetter	1		
54	NH 604041	Nut	1		
55	PWZ 104	Washer—plain	1		
56	PWZ 203	Washer—plain	1		
57	AUE 587	LEVER ASSEMBLY—FRONT	1		
	AUE 586	LEVER ASSEMBLY—REAR	1		
58	AJD 1042	Bolt—lever to spindle	2		
59	AUC 8396	Washer	2		
60	AJD 8012 Z	Nut	2		
61	12A 1279	Rod—throttle control	1		
62	FNZ 103	Nut—lock—rod	1		
63	12G 2006	Joint—ball	1		
64	22A 961	Lever—bellcrank	1		
65	LWZ 303	Washer—spring	1		
66	FNZ 103	Nut—lock—ball joint to crank	1		
67	PWZ 104	Washer—plain—pin	1		
68	12A 1283	Pin—throttle lever	1		
69	12G 913	Nut—pin	1		
70	12A 1282	Tag—anchor	1		

1300

Minimatic